



DONWAY
DEVELOPMENTS

Donway - The Right Way

Capability Statement

Donway Developments Pty Ltd

QBCC License number: 15505791

ABN: 677 724 506

Who is Donway Developments?

Donway Developments Pty Ltd (Donway Developments) is a Queensland-based Formwork Construction company specialising in commercial, residential and civil contracts.

Collectively, our team has over 70 years of expertise working on some of Australia's largest projects including Brisbane's Queens Wharf and Cross-River Rail network, Toowoomba's Second Range Crossing, Western Australia's Barrow Island LNG Plant and Northern Territory's INPEX LNG Plant.

We have established strong relationships with trusted industry partners, such as Acrow Engineering and Construction, Faresin Formwork Australia, Ausdirect Hire, and PERI Australia.

We pride ourselves on attention to detail, quality of workmanship, clear communication, and ability to exceed client expectations in a cost-effective manner – all while complying with the highest safety standards and regulations.

Our Formwork services

We deliver high-quality formwork solutions across a wide range of structural elements including:

Jump forms - *Efficient systems for high-rise construction.*

Suspended slabs - *Precision formwork for elevated concrete floors.*

Stairs - *Custom designed formwork for all type of stair structures.*

Columns and Beams - *Accurate formwork for vertical and horizontal elements.*

Reinforced concrete walls - *Durable solutions for conventional or system based wall forms.*

Comprehensive bridge work - *Comprehensive formwork services for all types and bridge construction.*

Our team brings safety, expertise and reliability to every project - no matter the scale.

Our people

Our team are highly experienced in all facets of construction project delivery, safety management and building. **Gavin Gallen, Stevie Brady and Niall Kilgarriff** - all Directors of Donway Developments.

Gavin Gallen

Gavin has over 22 years' experience in construction. His background includes work on some of Australia's largest high-rise, civil, mining and transport projects including Queen's Wharf and Cross-River Rail (Brisbane, Queensland) as well as the Barrow Island LPG Plant (Western Australia).

Gavin's strengths include keen attention to detail, strong project management skills that ensure timely and complete delivery and the ability to build lasting client relationships through clear and effective communication across all channels.

Certifications

- *Certificate IV in Workplace Health and Safety*
- *Certificate III in Carpentry*
- *Working at Heights*
- *Intermediate Rigging*
- *Advanced Scaffolding*
- *Working in Confined Spaces*



Stevie Brady

With 26 years of experience in the construction industry, Stevie is a highly skilled and accomplished formwork carpenter. His extensive project portfolio includes major works such as the Ampol Refinery Desalination Extension, Brisbane's Cross River Rail, Queens Plaza, Brisbane Square, Qld's M1/M3 upgrade, Toowoomba Bypass, Commonwealth Games Athletes Village and Western Australia's Mount Keith Nickel mine upgrade.

Stevie is known for his exceptional communication skills and a practical problem solving approach that incorporates innovative methods to ensure projects are delivered on time and within budget. As a Health and Safety representative on multiple projects, he has a deep understanding of the critical importance of workplace health and safety. Stevie's commitment to delivering high-quality workmanship is at the core of everything he does.

Certifications

- *Certificate of Attainment: Establish Legal and Risk Management for new Business Ventures.*
- *License to perform High Risk Work: Dogman and Boom Elevated Work Platform (EWP)*
- *Carpenter: Certificate Three for the trade of Carpenter in Australia.*
- *Working Safely at Heights Attainment: High Risk Unit of Competency*
- *OHS Consultation: Workcover Course*
- *Higher National Diploma (HND) in Mechanical Engineering*



Niall Kilgarriff

Niall brings 25 years of experience in carpentry and construction, with a string background in both civil and commercial projects. His impressive portfolio includes Brisbane's Indooroopilly roundabout upgrade, the Cross-River Rail network, Queensland's Toowoomba Second Range Crossing, Western Australia's Roy Hill mine and the Northern Territory's LNG INPEX project.

Niall is known for his exemplary on-site leadership, effectively managing tradespeople and fostering strong team collaboration. His professional approach and commitment to delivering high quality workmanship create a cohesive and efficient work environment, consistently exceeding project expectations.

Certifications

- *Carpenter: National standards for the trade of Carpenter in Ireland.*
- *Certificate III: Trade of Carpentry in Australia.*
- *License to perform High Risk Work: Dogman and Boom Elevated Work Platform (EWP)*



Current Projects

54-56 Albatross Avenue, Mermaid Waters

Albatross Avenue Apartments is a premium low-rise residential development featuring four floors and exclusive boutique residences.

Donway Developments is proud to be delivering the formwork component for this exclusive benchmark for premium living in Mermaid Beach, Qld.



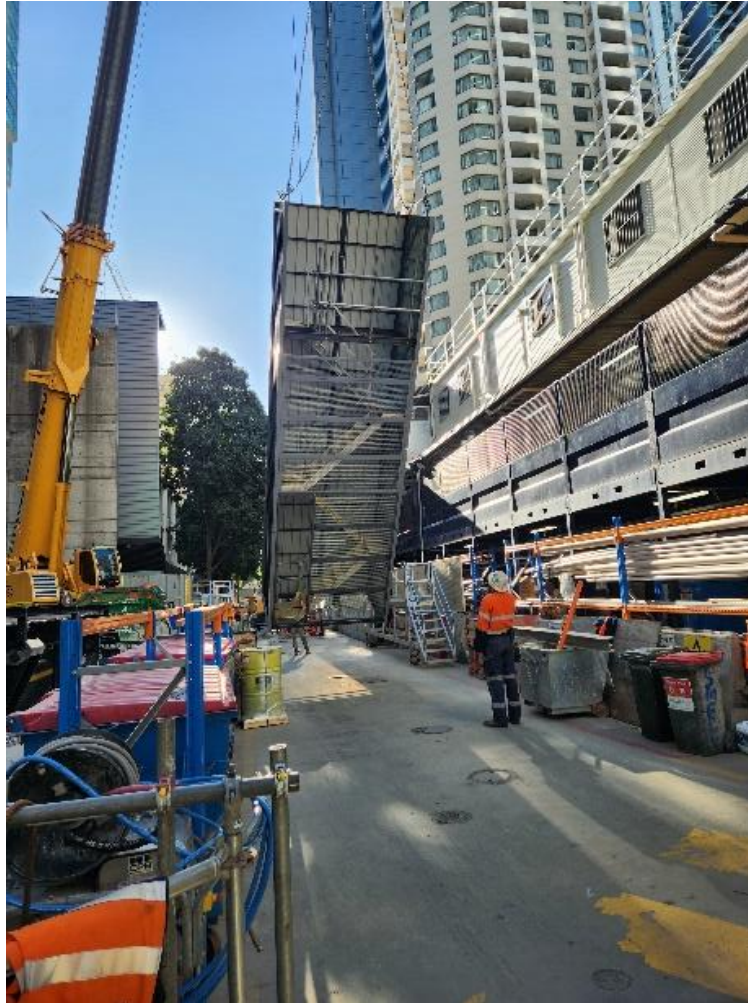
“Couldn’t be happier with the job Donway Developments are doing for us at Albatross Avenue. They are easy to deal with, keep to schedule and quality of work is spot on. Everything was done quickly and without a fuss. We would definitely recommend Donway to get the job done right.” **Lloyd James, Director, JIC Projects**

Project Experience

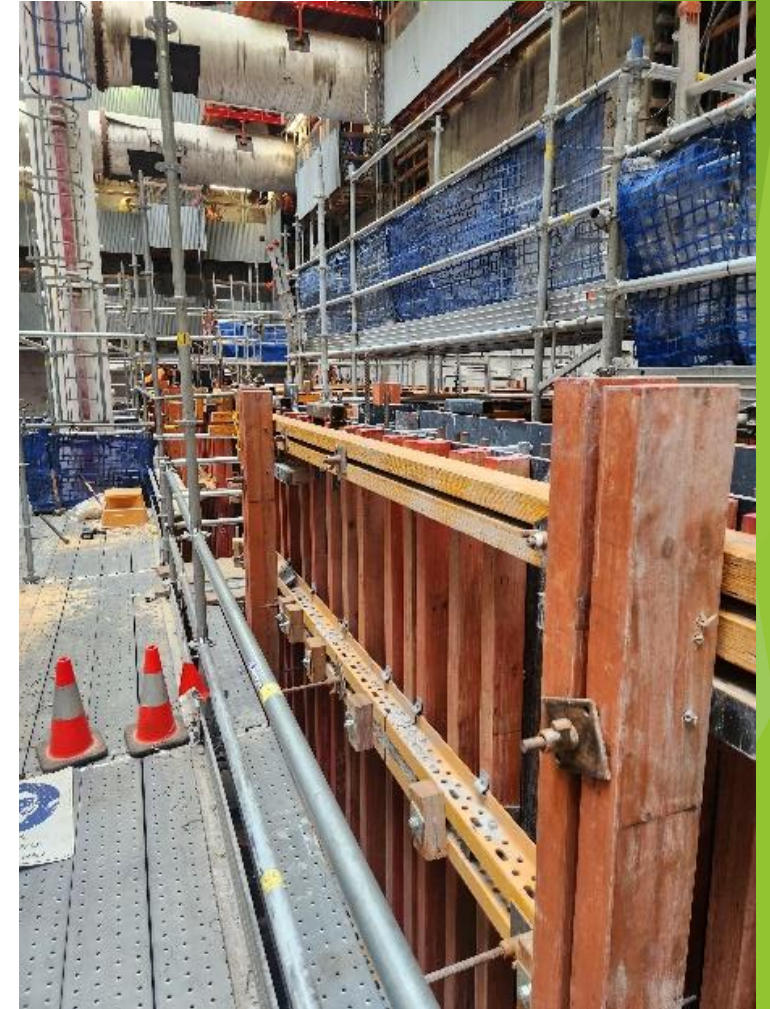
Brisbane's Cross River Rail Network



Jump installation



Stair installation



Jump Wall construction

Project Experience

Toowoomba Second Range Crossing

Pier, deck, parapet and abutment
construction.





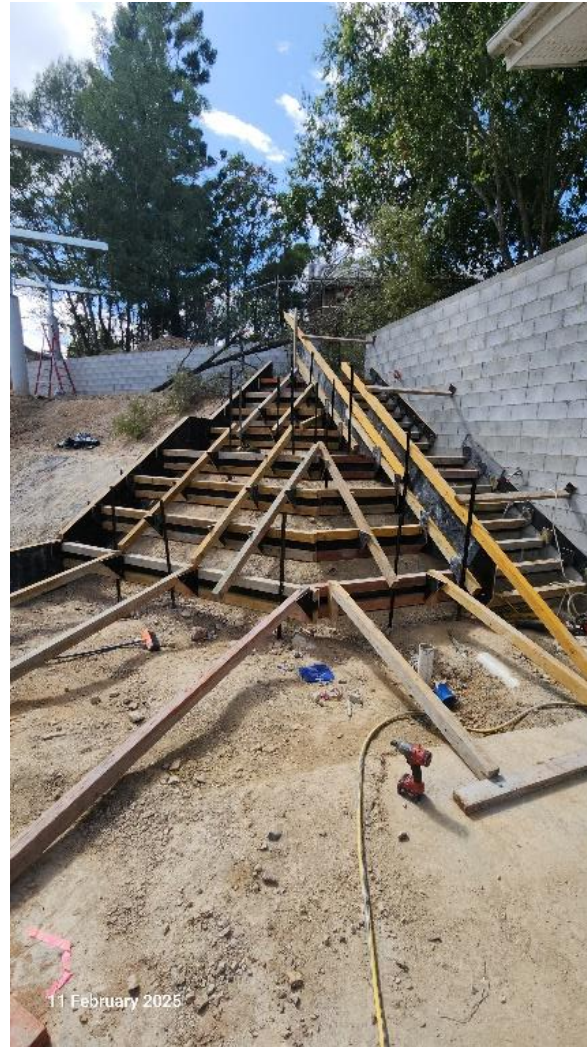
Project Experience

Brisbane Queen's Wharf
Jump form, suspended slabs,
columns and stairs.

Project Experience – South East Qld



Lift over-run



Stair construction



Jump Install

Testimonials

“Donway has consistently delivered top-tier results on our projects. Their Project Management is precise and well-structured, ensuring every phase runs smoothly. They are dependable, proactive, and always push to complete jobs on time without compromising quality. Their work ethic and reliability have made them one of the most trusted teams we’ve worked with”.

Danny McGrath, Superintendent, Rocktown Queensland.

“Working with the Donway crew was a game-changer. Their commitment to quality and keeping to schedule was exemplary. Even during tight deadlines, they maintained professionalism and a strong work ethic throughout the entire project”.

Cathal O’Braonian, Director, Abyss Constructions

“Gavin’s beliefs, values and representation of the company’s core values, construction safety essentials, and adherence to policies and procedures make him superlative in his role.”

Stevan Nijrich, Health, Safety and Environmental Superintendent
Leighton Contractors

Contact information

Email: admin@donwaydevelopments.com

Gavin Gallen

Mobile: 0415 118 044

Stevie Brady

Mobile: 0405 547 835

Niall Kilgarriff

Mobile: 0420 901 339

